



Welcome

---

# Tract 7260 Traffic Roundtable

August 23 2005



# The Problem

---

- Over-Development
  - Large Development
  - Residential Densification
- Overcrowded Arterials
- Neighborhood Problems
  - Cut-Through
  - Speeding



# Goals

---

- Shift non-residential traffic away from residential streets
- Identify incentives for cut-through traffic and remove them
- Avoid shifting one street's problem to another street

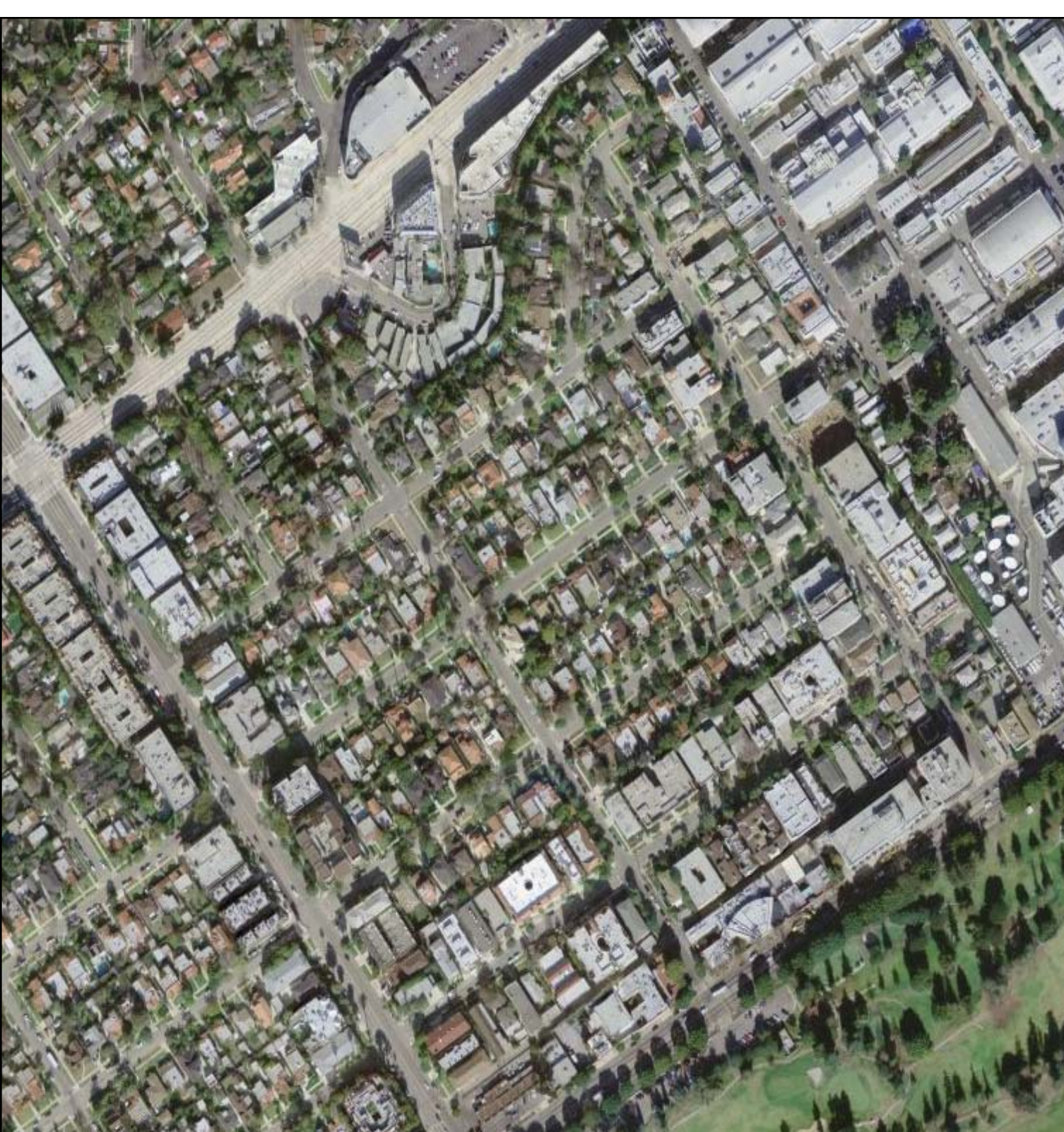


# Tools

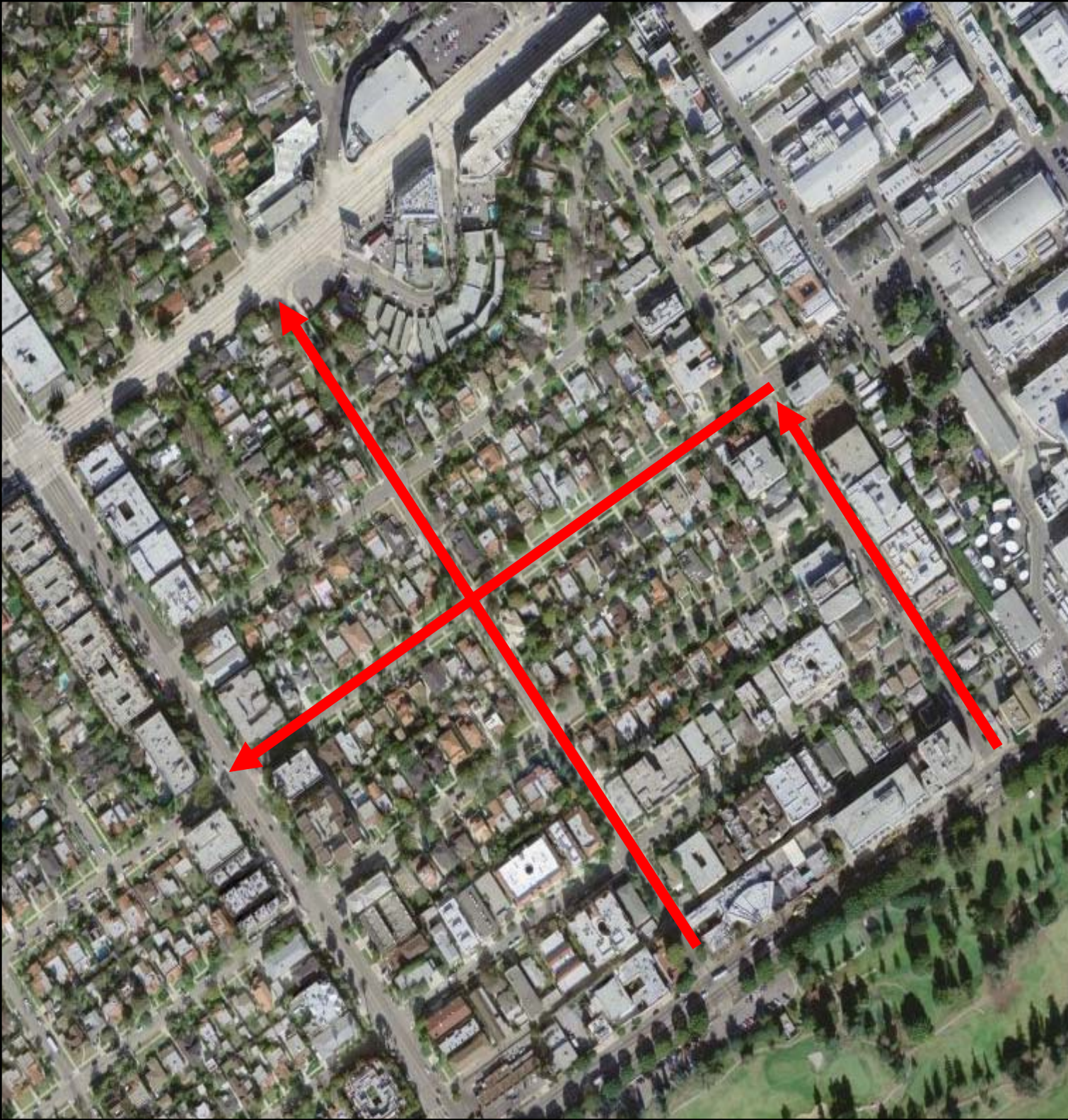
---

- Speed Bumps
  - Stop Signs
  - Semi-Diverter
  - Street Closures
  - Signal Timing
  - Signage
- 
- Important: Just because we ask for something doesn't mean we will get it.

# Southern Tract



# Southern Tract Cut-Through Patterns





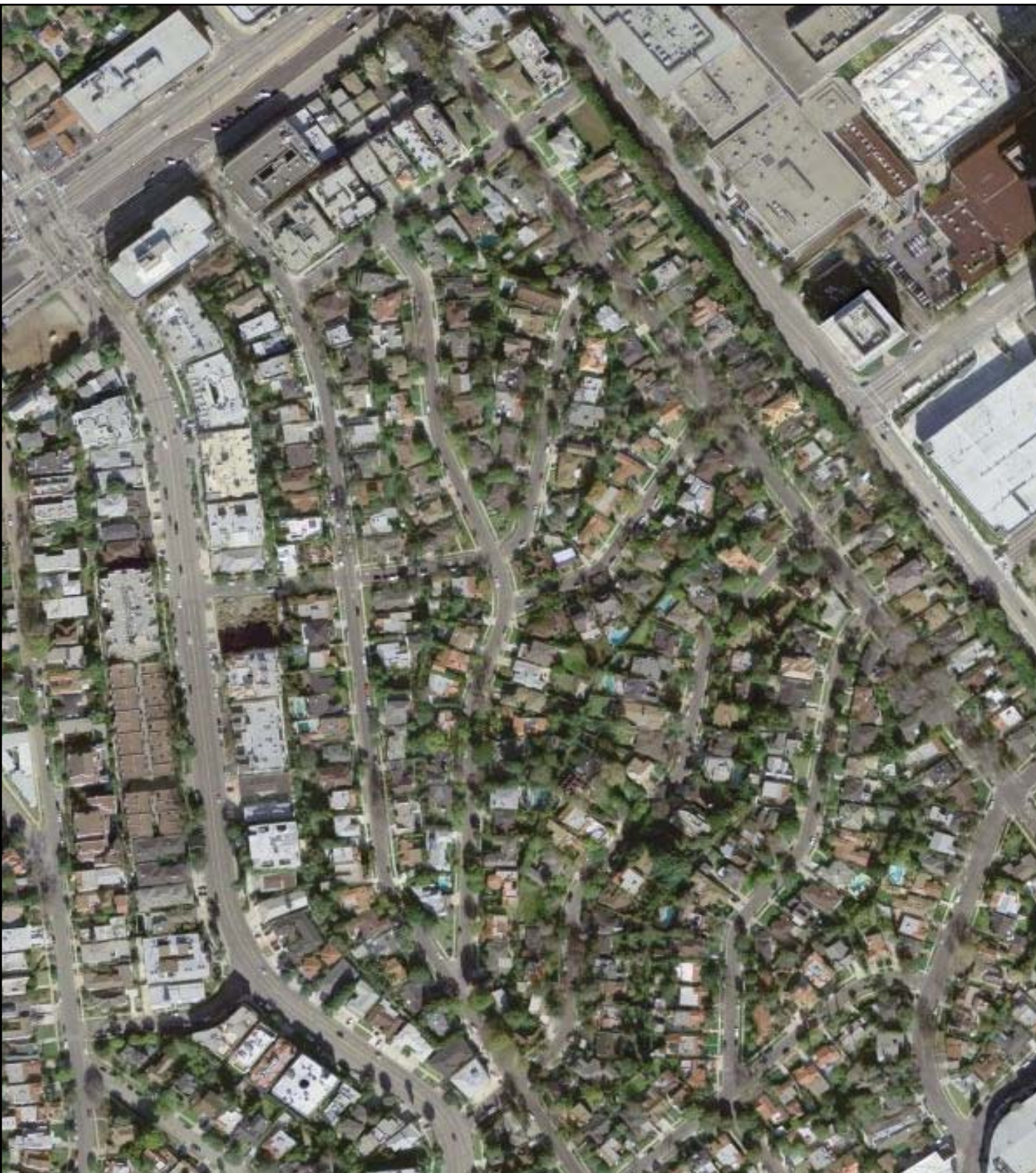
Ingress only on Olympic

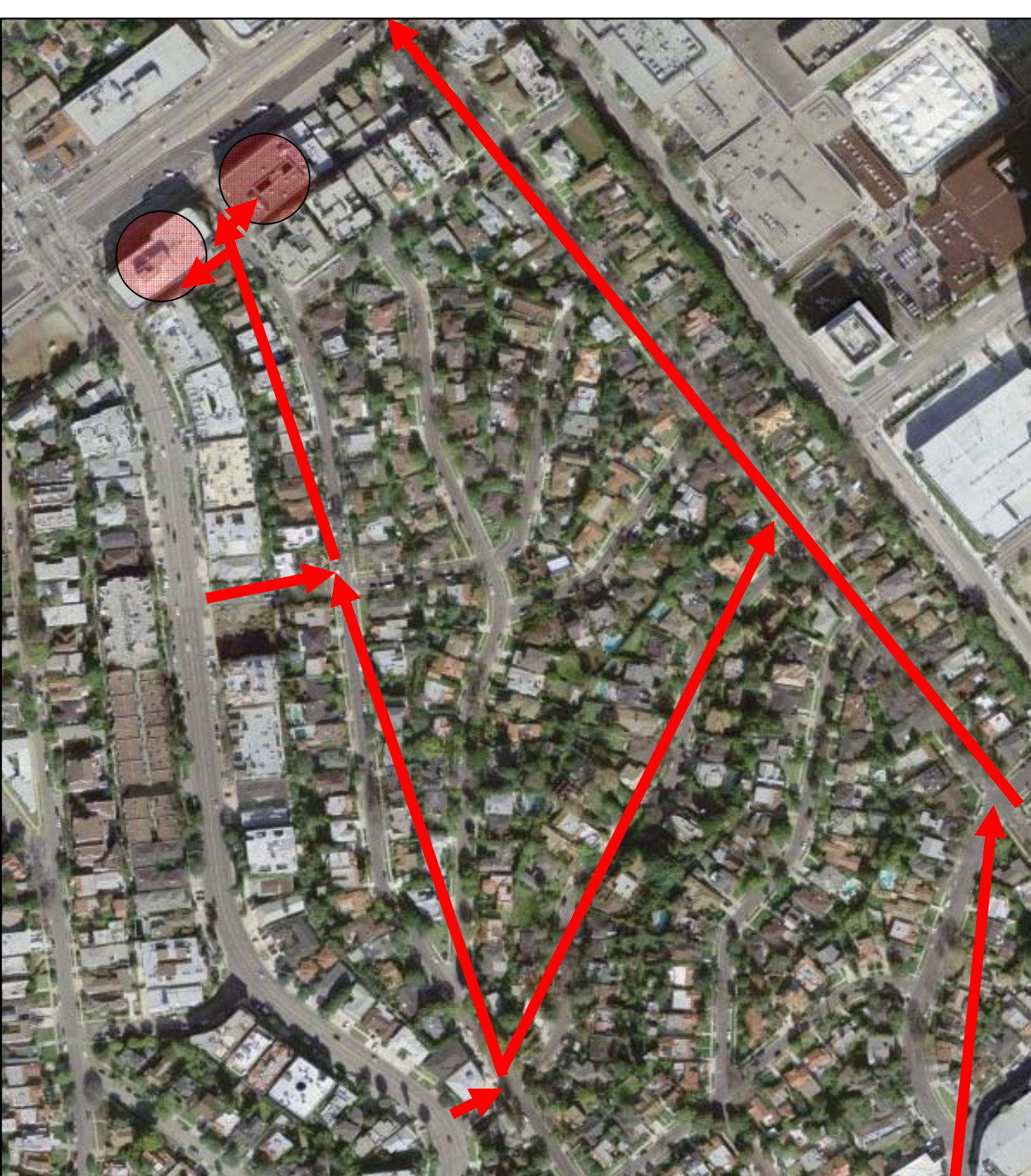
Egress only north of the alley near Pico

# Southern Tract Cut-Through Patterns Suggested Mitigations

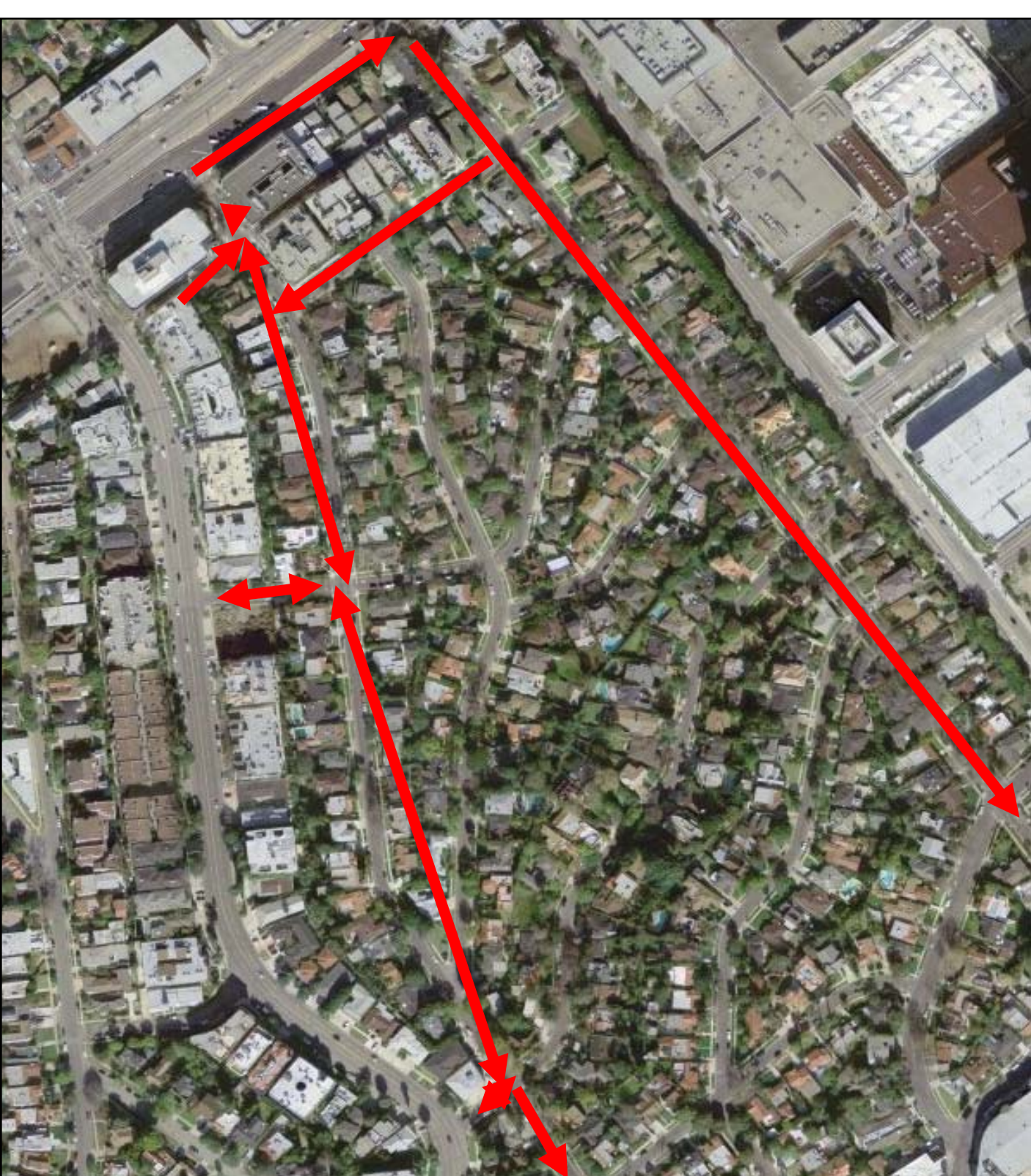
- Upside:  
North to south cut-through pathways are eliminated.
- Downside:  
Residents must enter on Beverly Glen or Olympic.

# Northern Tract



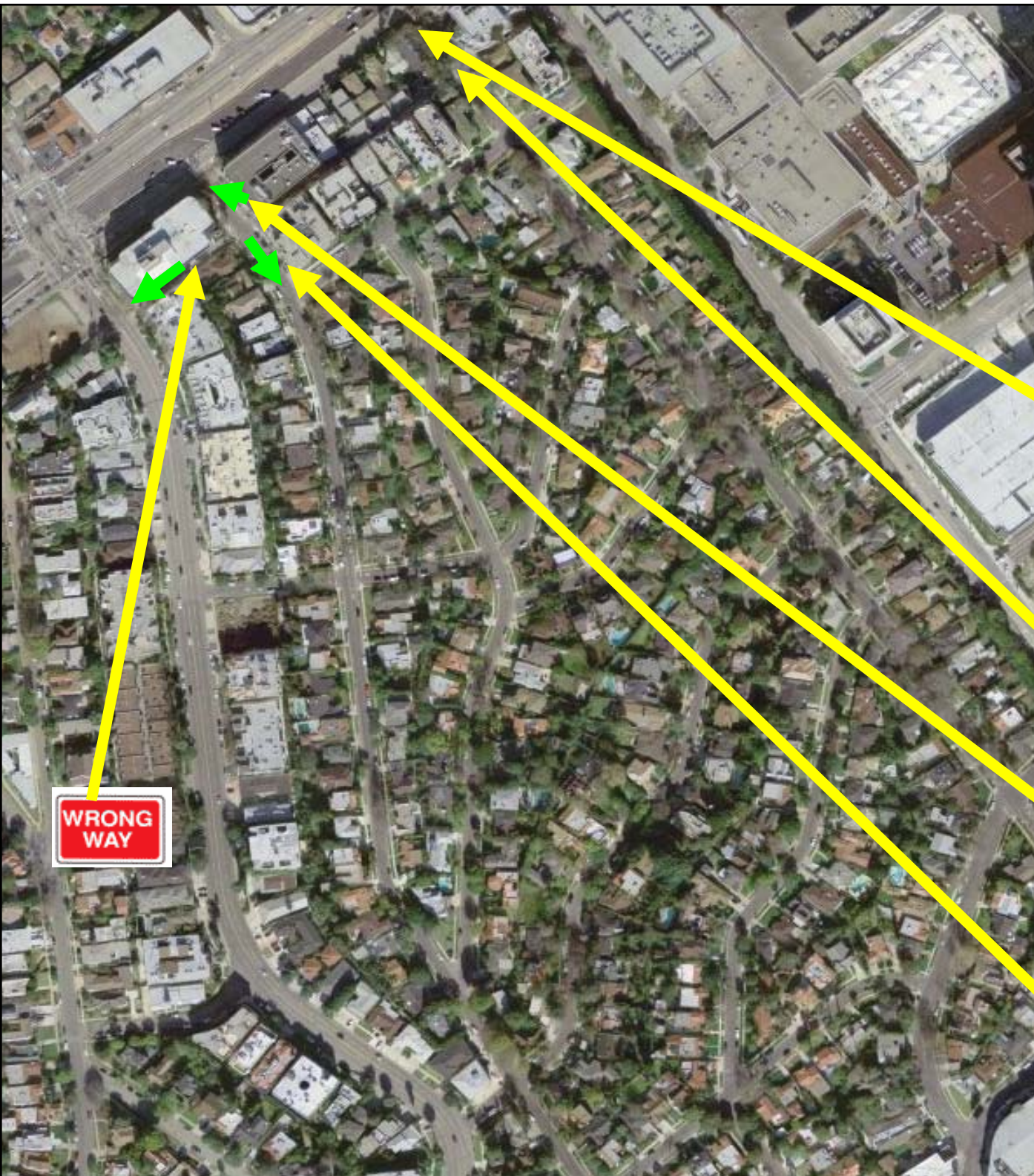


Northern Tract  
AM Cut-Through Patterns



Northern Tract  
PM Cut-Through Patterns

# Northern Tract Suggested Mitigations



**WRONG WAY**



Onto Fox Hills  
from SMB

NO RIGHT  
TURN



Onto Fox Hills  
from the office  
building

NO LEFT  
TURN



Onto Benecia  
from the office  
building

NO LEFT  
TURN



Southbound  
Between Missouri  
and the alley



# Discussion

---